



Entry to high-performance tableting

2200i

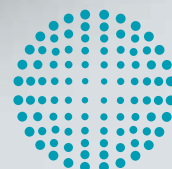
www.fette-compacting.com

TECHNOLOGY



COMPETENCE

SERVICE



**FETTE
COMPACTING**
be efficient

Profile:

Tablet press 2200i single-sided rotary tablet press

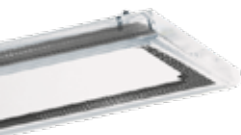
The single-sided rotary tablet press 2200i is your best choice when it comes to cost-efficient production. Proven standard components and high performance rotary turrets allow for a solution that significantly increases annual output. Fast tool changes are facilitated by way of interchangeable turrets or interchangeable segment turrets, and provide you additional flexibility unparalleled in its class.



TECHNOLOGY stands for everything we offer in production technology – from tablet presses and capsule filling machines through process equipment to tableting tools and format parts.

SERVICE covers all the services related to machines, process equipment and installations such as spare parts supply, plant modernization and technical field service department.

COMPETENCE is the overarching idea behind all our process-related services. This includes training, product trials, application and Performance Consulting as well as engineering.



FEATURES

- + Reliable high-performance rotary tablet press
- + Exchangeable turret
- + Maximum speed, productivity and precision
- + Operator terminal with 15" touchscreen
- + Wide range of accessories and process equipment
- + High-quality standard Fette Compacting

BENEFITS

- + Excellent price/performance ratio
- + Rapid format and product change-over results in high annual yields
- + Easy continuous use



Productivity and flexibility

Practical, high-performance rotary tablet press

- + 2200i tablet press with
exchangeable turret
- + Electrical cabinet with
modern computer architecture
- + Operating terminal

Optional accessories and process equipment

- + Stearate distributors
- + Vertical deduster
- + In-Process control of diameters,
thickness, weight and
hardness of the tablet
- + Handling system for turret exchanges
- + Wide range of turrets for different
types of application
- + In-process control units
- + Tablet distribution units
- + METALCHECK (Testing and sorting
of metal contaminated tablets)





Productivity and flexibility

Increased productivity through exchangeable turrets

- + Reduction of down-time through use of an extra turret, complete with cams and punches
- + Increased annual yield through optimization of the interchangeable turrets
- + Hard-chrome plated or stainless steel turrets are available as options
 - increased resistance to abrasion
 - increased resistance to chemicals
 - reduced roughness, smoother surfaces
 - improved and faster cleaning (washable)
- + Quick adjustment to highly varied production conditions
- + A wide range of tablet formats for single-layer applications possible





Design

Modular machine design

- + Maximum operating security
- + Maximum working safety
- + Enclosed compression compartment (reduces noise and dust)
- + Extended maintenance intervals
- + Modular design with separation into four sections:
 - head section
 - compression area
 - middle area
 - drive area
- + High-performance torque drive unit
- + Two-circuit lubrication with two lubrication units



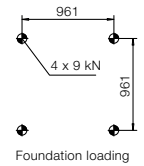
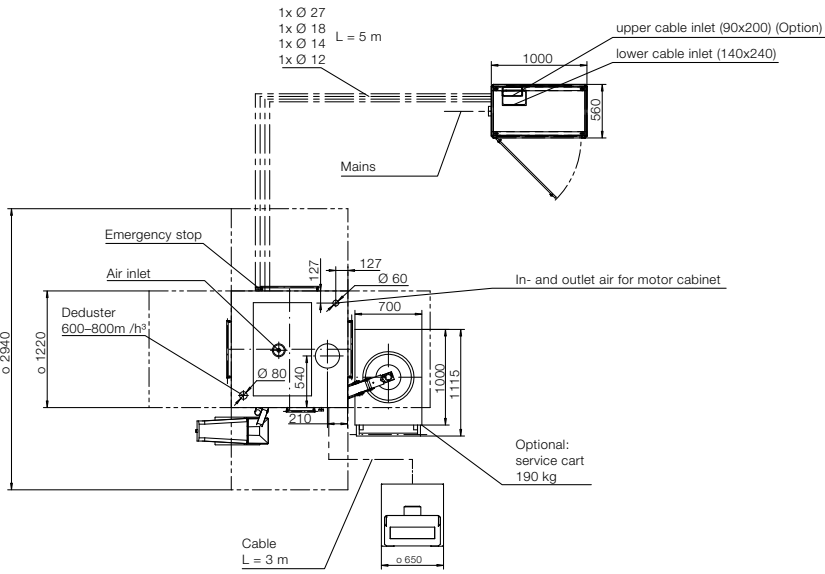
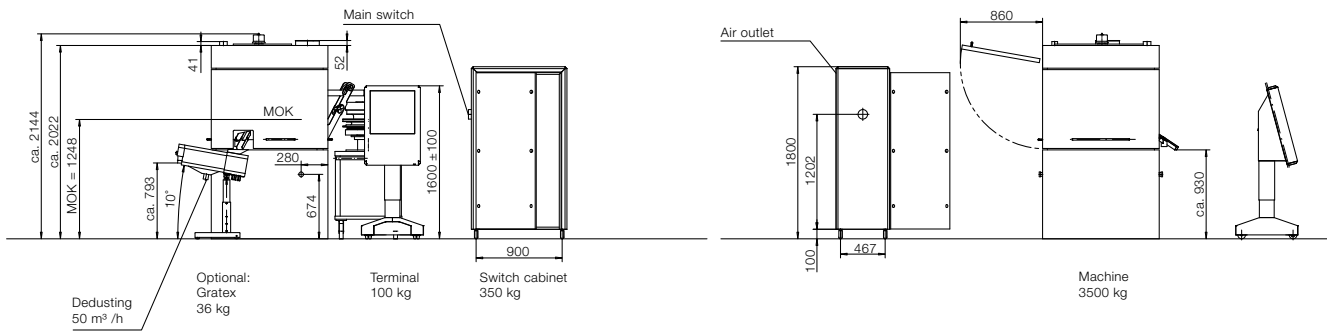


Easy machine operation

- + Ergonomic, height-adjustable operating terminal with 15" touchscreen
- + Screen layout with clear structure for intuitive learning
- + Structured diagnostic messages for easy operation and maintenance
- + 9 different user levels available for security
- + Windows embedded operating system
- + Uninterruptible power supply, prevents data loss



Dimensions



Main
400/440/480 V - 50 - 60Hz

Connection
4 x 6 mm² - on floor
4 x 10 mm² - cable conduit

Die (D) / Segments (S)		D	D	D	D	D	S	S	S	S
Number of punch stations		47	43	36	30	22	66	45	36	33
Punch type		FS19®/ EU19 BBS	FS19®/ EU19 TSM19 BB	FS19®/ EU19 TSM19 B	EU1"/ EU1" -441 TSM1" D	EU35	FS12®	FS19®/ EU19 TSM19	EU1" TSM1"	EU1"-441
Tablet output units/h	min.	42,300	38,700	32,400	27,000	19,800	59,400	40,500	32,400	29,700
	max.	338,400	309,600	259,200	180,000	105,600	475,200	324,000	216,000	198,000
Max. compression force 1*	kN	100	100	100	100	100	33	100	100	100
Max. compression force 2*	kN	100	100	100	100	100	33	100	100	100
Max. tablet diameter	mm	11	13	18	25	34	11	18	25	25
Max. filling depth	mm	20	20	20	22	26	22	22	22	22
Pitch circle diameter	mm	410	410	410	410	410	410	410	410	410
Turret rotation speed	min.	15	15	15	15	15	15	15	15	15
	max.	120	120	120	100	80	120	120	100	100
Die diameter	mm	22	24	30.16	38.1	52	–	–	–	–
Die-/segment height	mm	22.225	22.225	22.225	23.8	30	25	25	25	25
Punch shaft diameter	mm	19	19	19	25.35	35	12	19	25.35	25.35
Punch length Upper/lower punch	mm	133.6	133.6 (133.35)	133.6 (133.35)	133.6 (133.35)	133.6	133.6	133.6 (133.35)	133.6 (133.35)	133.6
Upper punch insertion depth	mm	1–4	1–4	1–4	1–4	1–4	1–4	1–4	1–4	1–4
Dimensions	mm	1,220 × 1,220 × 2,022								
Weight	kg	Tablet press 3,200–3,500 kg, operating terminal 100 kg, switch cabinet 350 kg								
Electrical supply parameters		Operating voltage 400–480 V, 50/60 Hz, power consumption 11.5 kW								

Theoretical values or technical limits: These can vary in practice, according to product and application.

Tablet thickness is a size dependent on product and can strongly vary.

* limited by punch properties

© by Fette Compacting GmbH

This publication may not be reprinted in whole or part without our express permission.

All right reserved. No rights may be derived from any errors in content or from typographical or typesetting errors. Diagrams, features and dimensions represent the current status on the date of issue of this leaflet. We reserve the right to make technical changes. The visual appearance of the products may not necessarily correspond to the actual appearance in all cases or in every detail.

Fette Compacting GmbH

Grabauer Strasse 24
21493 Schwarzenbek
Germany
Phone +49 4151 12-0
Fax +49 4151 3797
tablet@fette-compacting.com

Fette Compacting America, Inc.

400 Forge Way
Rockaway N.J. 07866
USA
Phone +1 973 5868722
Fax +1 973 5860450
sales@fetteamerica.com

Fette Compacting America Latina Ltda.

Av. Cambacica, 1200 módulo 10
Parque Imperador
CEP 13097-160 Campinas/SP
Brazil
Phone/Fax +55 19 37969910
contato@fette-compacting.com.br

Fette Compacting Mexico, SA de CV

Adolfo Prieto No. 1638
Colonia Del Valle Sur
03100 Mexico, DF
Mexico
Phone +52 55 4000 0653
tablet@fette-compacting.com

Fette Compacting (China) Co., Ltd.

8 Phoenix Road Jiangning Development Zone
211100 Nanjing
China
Phone +86 25 52121818
Fax +86 25 52129951
fcn@fette-compacting.com

**Fette Compacting Machinery
(India) Private Limited**

401 to 404, 4th Floor,
Dynasty Business Park, B wing,
Near J. B. Nagar Metro station,
Andheri – Kurla Road,
J. B. Nagar, Andheri East,
Mumbai – 400 059
India
Phone +91 2242163300
sales@fette-compacting.in

Competence Centre:
Plot No S 115, Phase III B
Verna Industrial Estate
Verna, Goa 403 722
India
Phone +91 832 6690307

Fette Compacting Asia Pacific Pte Ltd.

107 Eunos Avenue 3, #01-01
Singapore 409837
Singapore
Phone +65 6592 5654
Fax +65 6547 1939
infoasiapacific@fette-compacting.com

Fette Compacting Ibérica, SL

Calle Saturno 1
28760 Tres Cantos
Spain
Phone +34 91 8039689
Fax +34 91 1730017
fcib@fette-compacting.com

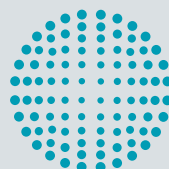
Fette Compacting et Uhlmann France SAS

1, Rue du Centre
93160 Noisy Le Grand
France
Phone +33 155 812121
Fax +33 155 812120
contact@fette-uhlmann.fr

Fette Compacting Middle East FZE

Jebel Ali Free Zone Jafza
Lobby 14, Office 308
Dubai
United Arab Emirates
Phone +971 48808226
tablet@fette-compacting.com

www.fette-compacting.com



**FETTE
COMPACTING**
be efficient